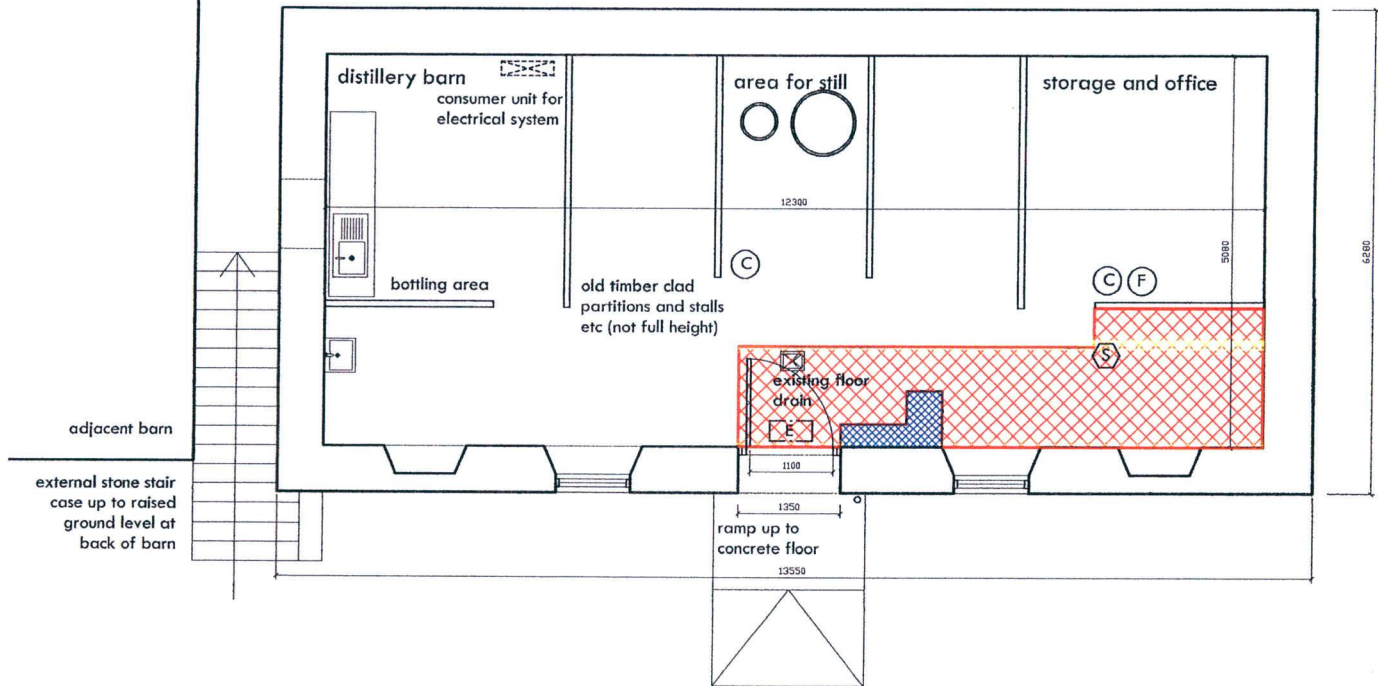


Premises Licence Application

Ground level to the rear of the barn is higher than the internal floor level by circa 2m



LOCATION OF ROAD
'ARLUSSA TO BARNHILL'

NOTES

- Premises to be licenced are within the external walls.
- Toilets are located separately.
- No existing stairs, steps, lifts or elevators.
- Alcohol display frontage height and width = 1m x 1m.
- Alcohol is the main product on sale/
- The % of retail floor space for alcohol = 7.3%.
- Total retail area = 7.3 sqm.
- Display = 0.54 sqm

LEGEND FOR FIRE DETECTION AND SUPPRESSION FITTINGS

- (S) Hard wired smoke detector
- [E] Emergency lighting with directional signage
- (F) Fire extinguisher (foam ATC)
- (C) Fire extinguisher (carbon dioxide)

KEY FOR AREAS

- [Red hatched] General retail area and online sales.
- [Blue hatched] Alcohol display area for tours.

Licensing Application

Lussa Gin Distillery at Ardlussa

drawing title		revisions		notes
LICENSING PLAN				project LICENCE PLANS FOR LUSSA GIN DISTILLERY AND OFFICE AT ARDLUSSA ESTATE ON THE ISLE OF JURA
rawing no. L100	scale 1:100 @ A4			client LUSSA DRINKS COMPANY LLP
rawn by AMW	date MAY 2019			

116 shakespeare street glasgow G20 8LF

0141 628 5557
mail@lucidarchitecture.co.uk
www.lucidarchitecture.co.uk